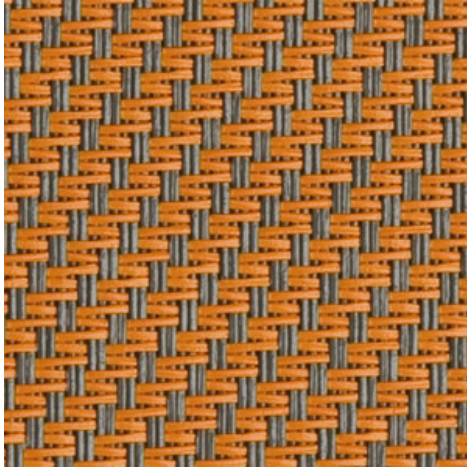


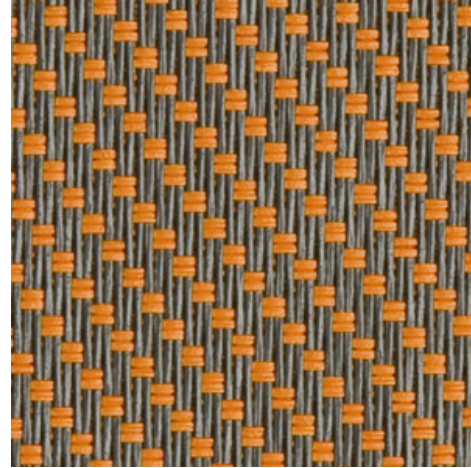
Serge 600 - grey | gold (001004)

Technical info

FRONT



BACK



| | | |
|--|---------------------|---|
| Widths | | 160 cm 190 cm 220 cm 250 cm 270 cm 320 cm |
| Composition | | Fibreglass 42% - PVC 58% |
| Openness factor | NBN EN 410 | 5.00% |
| Weight | NF EN 12127 | 525.00 g/m ² |
| Thickness | ISO 5084 | 0.74 mm |
| Density | ISO 7211/2 | WARP 18.00 yarn/cm WEFT 14.00 yarn/cm |
| Color fastness to artificial light | ISO 105 B02 | >7 |
| Color fastness to artificial weathering | ISO 105 B04 | >7 |
| Air permeability | ISO 9237 | 580.00 l/m ² /s |
| Roll length | | 50 m / 30 m for all widths > 270 cm |
| Cleaning | | With soapy water |
| Confection | | By heat, high frequency or ultrasonic welding |
| Fire classification | | |
| └ Europe | UNE-EN 13501-1:2007 | C-s3, d0 |
| └ France | NF P92-503 | M1 |
| └ Italy | UNI 9177 | Class 1 |
| └ Germany | DIN 4102 | B2 |
| └ UK | BS 5867 | C |
| └ USA | NFPA 701 | FR |

| Serge 600 - grey gold (001004) | | Technical info | |
|--|----------------------|---------------------|---------------------|
| Tear strength | ISO 4674-1 methode 2 | | |
| ↳ Original | | WARP 8.50 daN | WEFT 7.50 daN |
| ↳ After climatic chamber -30°C | | WARP 7.80 daN | WEFT 7.50 daN |
| ↳ After climatic chamber +70°C | | WARP 8.20 daN | WEFT 7.20 daN |
| Elongation up to break | ISO 1421 | | |
| ↳ Original | | WARP 3.10 % | WEFT 2.75 % |
| ↳ After color fastness to artificial light | | WARP 4.00 % | WEFT 2.90 % |
| ↳ After colour fastness to artificial weathering | | WARP 3.50 % | WEFT 2.80 % |
| ↳ After climatic chamber -30°C | | WARP 3.00 % | WEFT 2.50 % |
| ↳ After climatic chamber +70°C | | WARP 2.85 % | WEFT 2.50 % |
| Breaking strength | ISO 1421 | | |
| ↳ Original | | WARP 260.00 daN/5cm | WEFT 225.00 daN/5cm |
| ↳ After color fastness to artificial light | | WARP 240.00 daN/5cm | WEFT 220.00 daN/5cm |
| ↳ After colour fastness to artificial weathering | | WARP 240.00 daN/5cm | WEFT 225.00 daN/5cm |
| ↳ After climatic chamber -30°C | | WARP 225.00 daN/5cm | WEFT 200.00 daN/5cm |
| ↳ After climatic chamber +70°C | | WARP 180.00 daN/5cm | WEFT 185.00 daN/5cm |

| | |
|-------------------------|----------------------------------|
| Front - Interior | Serge 600 - grey gold (001004) |
|-------------------------|----------------------------------|

| | |
|--|-------|
| Visual properties | |
| Tv = Visual light transmittance | 4.30% |
| Tuv = UV transmittance | 3.70% |

| | |
|-----------------------------------|--------|
| Solar energetic properties | |
| As = Solar absorptance | 65.50% |
| Rs = Solar reflectance | 29.50% |
| Ts = Solar transmittance | 4.90% |

| | | | | |
|-----------------------------------|----------|-----------|-----------|-----------|
| Fabric + glazing: G-factor | | | | |
| | G | Te | Qi | SC |
| Glazing A | 0.55 | 0.05 | 0.50 | 0.65 |
| Glazing B | 0.55 | 0.05 | 0.50 | 0.72 |
| Glazing C | 0.47 | 0.03 | 0.44 | 0.80 |
| Glazing D | 0.28 | 0.02 | 0.26 | 0.88 |

G = Total solar energy transmittance / Te = Direct solar transmittance / Qi = Secondary heat transfer factor / SC = Shading coefficient

| | | |
|--|---------|------------------|
| Visual comfort | | |
| Normal solar transmittance | Class 4 | Very good effect |
| Glare control | Class 2 | Moderate effect |
| Privacy night | Class 2 | Moderate effect |
| Visual contact with the outside | Class 2 | Moderate effect |
| Daylight utilisation | Class 1 | Little effect |

| | | | |
|--|------------------|------------------|------------------|
| Thermal comfort G-factor = Total solar energy transmittance | | | |
| Glazing A | Glazing B | Glazing C | Glazing D |
| Class 0 | Class 0 | Class 1 | Class 2 |

| | | | |
|---|------------------|------------------|------------------|
| Thermal comfort Qi-factor = Secondary heat transfer factor | | | |
| Glazing A | Glazing B | Glazing C | Glazing D |
| Class 0 | Class 0 | Class 0 | Class 1 |

Class 0 = Very little effect / 1 = Little effect / 2 = Moderate effect / 3 = Good effect / 4 = Very good effect

Back - Interior

Serge 600 - grey | gold (001004)

Visual properties

| | |
|--|-------|
| Tv = Visual light transmittance | 4.30% |
| Tuv = UV transmittance | 3.70% |

Solar energetic properties

| | |
|---------------------------------|--------|
| As = Solar absorptance | 72.30% |
| Rs = Solar reflectance | 22.80% |
| Ts = Solar transmittance | 4.90% |

Fabric + glazing: G-factor

| | G | Te | Qi | SC |
|------------------|----------|-----------|-----------|-----------|
| Glazing A | 0.59 | 0.04 | 0.54 | 0.69 |
| Glazing B | 0.58 | 0.03 | 0.54 | 0.76 |
| Glazing C | 0.49 | 0.03 | 0.47 | 0.84 |
| Glazing D | 0.29 | 0.01 | 0.27 | 0.90 |

G = Total solar energy transmittance / Te = Direct solar transmittance / Qi = Secondary heat transfer factor / SC = Shading coefficient

Visual comfort

| | | |
|--|---------|------------------|
| Normal solar transmittance | Class 4 | Very good effect |
| Glare control | Class 3 | Good effect |
| Privacy night | Class 2 | Moderate effect |
| Visual contact with the outside | Class 2 | Moderate effect |
| Daylight utilisation | Class 1 | Little effect |

Thermal comfort G-factor = Total solar energy transmittance

| Glazing A | Glazing B | Glazing C | Glazing D |
|------------------|------------------|------------------|------------------|
| Class 0 | Class 0 | Class 1 | Class 2 |

Thermal comfort Qi-factor = Secondary heat transfer factor

| Glazing A | Glazing B | Glazing C | Glazing D |
|------------------|------------------|------------------|------------------|
| Class 0 | Class 0 | Class 0 | Class 1 |

Class 0 = Very little effect / 1 = Little effect / 2 = Moderate effect / 3 = Good effect / 4 = Very good effect

| | |
|-------------------------|----------------------------------|
| Front - Exterior | Serge 600 - grey gold (001004) |
|-------------------------|----------------------------------|

| Visual properties | |
|--|-------|
| Tv = Visual light transmittance | 4.30% |
| Tuv = UV transmittance | 3.70% |

| Solar energetic properties | |
|---------------------------------|--------|
| As = Solar absorptance | 65.50% |
| Rs = Solar reflectance | 29.50% |
| Ts = Solar transmittance | 4.90% |

| Fabric + glazing: G-factor | | | | |
|----------------------------|----------|-----------|-----------|-----------|
| | G | Te | Qi | SC |
| Glazing A | 0.18 | 0.04 | 0.14 | 0.22 |
| Glazing B | 0.14 | 0.03 | 0.11 | 0.19 |
| Glazing C | 0.09 | 0.03 | 0.06 | 0.15 |
| Glazing D | 0.08 | 0.01 | 0.06 | 0.24 |

G = Total solar energy transmittance / Te = Direct solar transmittance / Qi = Secondary heat transfer factor / SC = Shading coefficient

| Thermal comfort G-factor = Total solar energy transmittance | | | |
|---|------------------|------------------|------------------|
| Glazing A | Glazing B | Glazing C | Glazing D |
| Class 2 | Class 3 | Class 4 | Class 4 |

| Thermal comfort Qi-factor = Secondary heat transfer factor | | | |
|--|------------------|------------------|------------------|
| Glazing A | Glazing B | Glazing C | Glazing D |
| Class 2 | Class 2 | Class 3 | Class 3 |

Class 0 = Very little effect / 1 = Little effect / 2 = Moderate effect / 3 = Good effect / 4 = Very good effect

Back - Exterior

Serge 600 - grey | gold (001004)

Visual properties

| | |
|--|-------|
| Tv = Visual light transmittance | 4.30% |
| Tuv = UV transmittance | 3.70% |

Solar energetic properties

| | |
|---------------------------------|--------|
| As = Solar absorptance | 72.30% |
| Rs = Solar reflectance | 22.80% |
| Ts = Solar transmittance | 4.90% |

Fabric + glazing: G-factor

| | G | Te | Qi | SC |
|------------------|----------|-----------|-----------|-----------|
| Glazing A | 0.20 | 0.04 | 0.16 | 0.23 |
| Glazing B | 0.15 | 0.04 | 0.12 | 0.20 |
| Glazing C | 0.10 | 0.03 | 0.07 | 0.16 |
| Glazing D | 0.08 | 0.01 | 0.07 | 0.25 |

G = Total solar energy transmittance / Te = Direct solar transmittance / Qi = Secondary heat transfer factor / SC = Shading coefficient

Thermal comfort G-factor = Total solar energy transmittance

| Glazing A | Glazing B | Glazing C | Glazing D |
|------------------|------------------|------------------|------------------|
| Class 2 | Class 2 | Class 4 | Class 4 |

Thermal comfort Qi-factor = Secondary heat transfer factor

| Glazing A | Glazing B | Glazing C | Glazing D |
|------------------|------------------|------------------|------------------|
| Class 2 | Class 2 | Class 3 | Class 3 |

Class 0 = Very little effect / 1 = Little effect / 2 = Moderate effect / 3 = Good effect / 4 = Very good effect